

**PRELIMINARY ISSUE**  
THIS PLAN ISSUED FOR  
ADVANCE INFORMATION ONLY

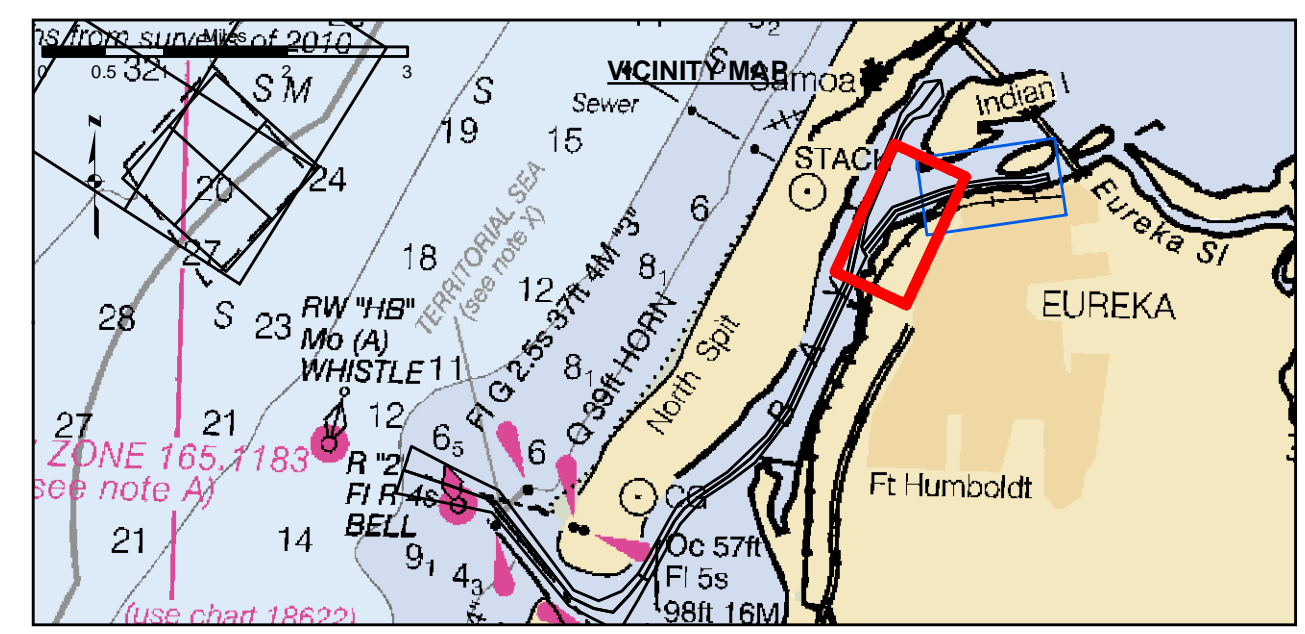
**US Army Corps of Engineers**  
San Francisco District  
450 Golden Gate Ave  
San Francisco, CA 94102

**DISCLAIMER**  
The United States Government furnishes this information as a public service. It is not intended to be used for any purpose other than the intended purpose. The user is responsible for the results of any application of the data for other than the intended purpose. The United States Government makes no warranty, expressed or implied, concerning the accuracy, completeness, or reliability of the information. The United States Government shall not be liable for any damages, including consequential damages, arising from the use of the information. These data belong to the Government. Therefore, the user shall not be held liable for any damages, including consequential damages, arising from the use of the information. The user shall not be held liable for any damages, including consequential damages, arising from the use of the information.

Angle Point	Easting	Northing
01E	5956172.98	2181852.13
02E	5957495.79	2183569.43
03E	5959682.09	2184360.53
04E	5960648.49	2184617.53
05E	5961936.19	2184796.03
06E	5963483.19	2184829.53
07E	5964225.19	2185019.53
08E	5964324.49	2184632.13
09E	5963537.79	2184430.63
10E	5961968.09	2184396.63
11E	5960727.59	2184224.73
12E	5959501.69	2183978.43
13E	5957741.49	2183232.93
14E	5956489.79	2181608.03
E1	5956331.39	2181730.13
E2	5957618.69	2183401.23
E3	5959741.89	2184169.53
E4	5960588.09	2184421.13
E5	5961952.09	2184596.33
E6	5963510.49	2184630.03
E7	5964274.85	2184825.82

Chart Date:	Jun 06, 2022
Designed by:	PDT
Plotted by:	PDT
Checked by:	PDT
Drawn by:	PDT

**HUMBOLDT COUNTY**  
**HUMBOLDT BAY**  
**EUREKA CHANNEL**  
**CONDITION SURVEY**  
2-4 JUNE 2022

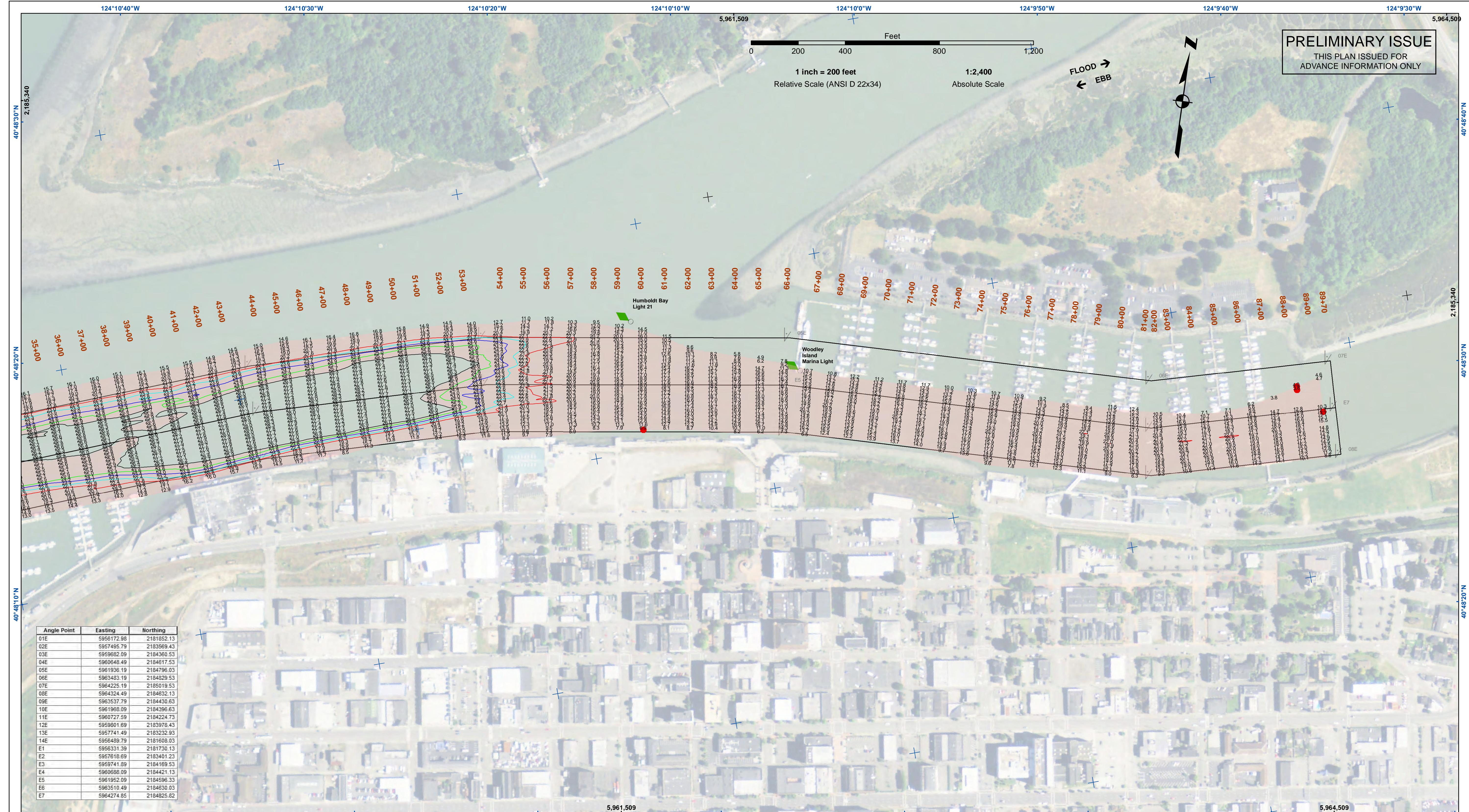


Federal Navigation Channel	Beacon, General	<b>Contours</b>
Shoaling Area	Obstruction Point	-26
Placement Area	Navigation Buoy	-25
Anchorage Area	Navigation Buoy	-24
Wreck Area	Shoalest Sounding*	-23
Submerged Wreck		-22
Angle Point		

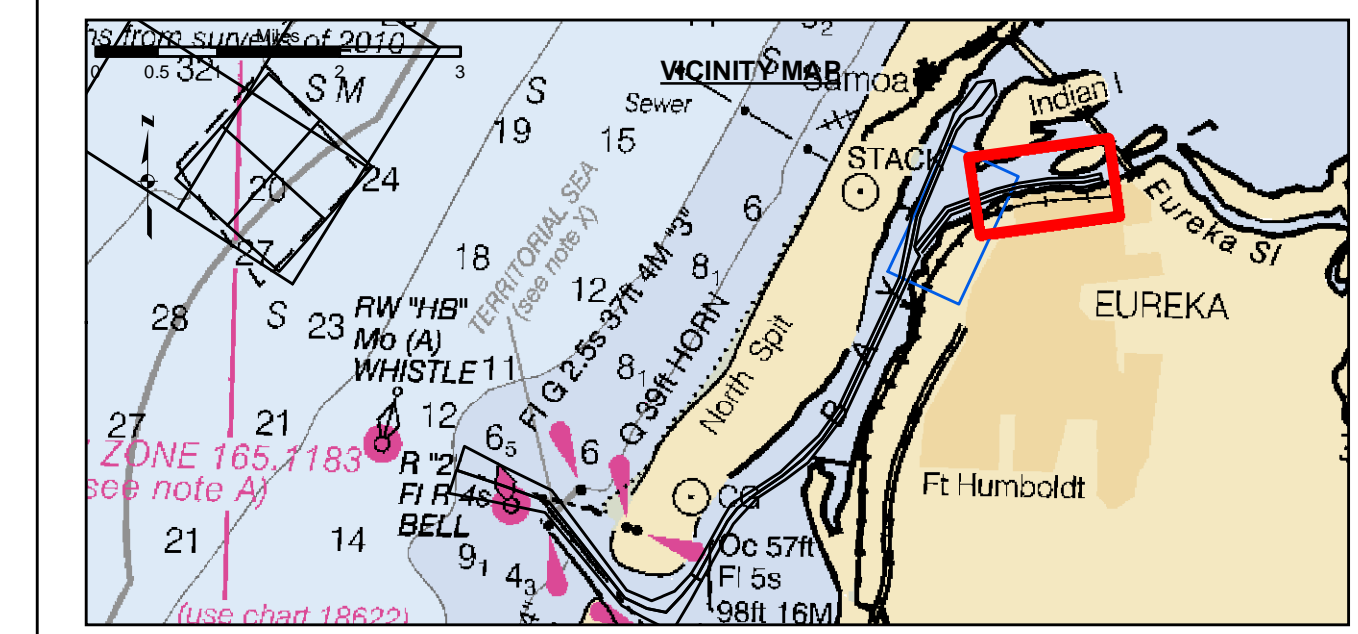
**NOTES:**  
DRAWINGS NOT TO BE USED AS NAVIGATION. ONLY CHANNEL CONDITION AT DATE OF SURVEY. THE LOCATION OF ALL NAVIGATION AIDS ARE BASED ON INFORMATION PROVIDED BY THE U.S. COAST GUARD. BUOY LOCATION REPRESENT THE POSITION OF THE SINKER ONLY.  
SURVEYED BY THE CORPS OF ENGINEERS.  
SOUNDINGS WERE TAKEN BY FATHOMETER AND ARE SHOWN TO THE NEAREST TENTHS OF A FOOT.  
SOUNDINGS ARE BASED ON THE DATUM OF MEAN LOWER LOW WATER AT THE LOCALITY.  
PLANE GRID AND COORDINATES ARE BASED ON THE STATE OF CALIFORNIA COORDINATE SYSTEM, LAMBERT CONFORMAL PROJECTION, ZONE I NAD 83, CALIFORNIA, AS DESCRIBED IN SPECIAL PUBLICATION NO. 235, PUBLISHED BY THE NATIONAL OCEAN SURVEY.

PROJECT DEPTHS ARE AS FOLLOWS:  
BAR & ENTRANCE CHANNEL = 48 FEET  
NORTH BAY, SAMOA TO MILE 5.0 & = 38 FEET  
EUREKA CHANNEL, FIELDS LANDING CHANNEL & MILE 5.0 TO "N" STREET = 26 FEET  
1:00 INDICATES THE NUMBER AND BEGINNING OF A LINE OF SOUNDINGS.  
SOUNDINGS ARE BASED ON TIDE GAUGES REFERENCED TO U.S.C. & G.S. BENCH MARKS AS FOLLOWS:  
EUREKA & SOMOA CHANNELS - B.M. NO. 4 (1906) ELEV. 33.61' M.L.L.W.  
ENTRANCE & NORTH BAY CHANNELS - B.M. NO. 9 (1937) ELEV. 16.35' M.L.L.W.  
FIELDS LANDING CHANNEL - B.M. NO. 5 (1925) ELEV. 8.52' M.L.L.W.

**Sheet Reference**  
**Number**  
**1 of 2**



Angle Point	Easting	Northing
01E	5956172.98	2181852.13
02E	5957495.79	2183569.43
03E	5959682.09	2184360.53
04E	5960648.49	2184617.53
05E	5961936.19	2184796.03
06E	5963483.19	2184829.53
07E	5964225.19	2185019.53
08E	5964324.49	2184632.13
09E	5963537.79	2184430.63
10E	5961968.09	2184396.63
11E	5960727.59	2184224.73
12E	5959501.69	2183978.43
13E	5957741.49	2183232.93
14E	5956489.79	2181608.03
E1	5956331.39	2181730.13
E2	5957618.69	2183401.23
E3	5959741.89	2184169.53
E4	5960588.09	2184421.13
E5	5961952.09	2184596.33
E6	5963510.49	2184630.03
E7	5964274.85	2184825.82



	Federal Navigation Channel		Beacon, General	<b>Contours</b>	
	Shoaling Area		Obstruction Point		-26
	Placement Area		Navigation Buoy		-25
	Anchorage Area		Navigation Buoy		-24
	Wreck Area		Shoalest Sounding*		-23
	Submerged Wreck				-22
	Angle Point				

NOTES:  
DRAWINGS NOT TO BE USED AS NAVIGATION. ONLY CHANNEL CONDITION AT DATE OF SURVEY. THE LOCATION OF ALL NAVIGATION AIDS ARE BASED ON INFORMATION PROVIDED BY THE U.S. COAST GUARD. BUOY LOCATION REPRESENT THE POSITION OF THE SINKER ONLY.

SURVEYED BY THE CORPS OF ENGINEERS.

SOUNDINGS WERE TAKEN BY FATHOMETER AND ARE SHOWN TO THE NEAREST TENTHS OF A FOOT.

SOUNDINGS ARE BASED ON THE DATUM OF MEAN LOWER LOW WATER AT THE LOCALITY.

PLANE GRID AND COORDINATES ARE BASED ON THE STATE OF CALIFORNIA COORDINATE SYSTEM, LAMBERT CONFORMAL PROJECTION, ZONE I NAD 83, CALIFORNIA, AS DESCRIBED IN SPECIAL PUBLICATION NO. 235, PUBLISHED BY THE NATIONAL OCEAN SURVEY.

PROJECT DEPTHS ARE AS FOLLOWS:  
BAR & ENTRANCE CHANNEL = 48 FEET  
NORTH BAY, SAMOA TO MILE 5.0 & = 38 FEET  
EUREKA CHANNEL, FIELDS LANDING CHANNEL & MILE 5.0 TO "N" STREET = 26 FEET

1:00 INDICATES THE NUMBER AND BEGINNING OF A LINE OF SOUNDINGS.

SOUNDINGS ARE BASED ON TIDE GAUGES REFERENCED TO U.S.C. & G.S. BENCH MARKS AS FOLLOWS:  
EUREKA & SOMMOA CHANNELS - B.M. NO. 4 (1906) ELEV. 33.61' M.L.L.W.  
ENTRANCE & NORTH BAY CHANNELS - B.M. NO. 9 (1937) ELEV. 16.35' M.L.L.W.  
FIELDS LANDING CHANNEL - B.M. NO. 5 (1925) ELEV. 8.52' M.L.L.W.

**PRELIMINARY ISSUE**  
THIS PLAN ISSUED FOR  
ADVANCE INFORMATION ONLY

**US Army Corps of Engineers**  
San Francisco District  
450 Golden Gate Ave  
San Francisco, CA 94102

**DISCLAIMER:** The United States Government furnishes this information as a service to the public and does not warrant, express or implied, the accuracy, completeness, or reliability of the data. The user is responsible for the results of any application of the data for other than its intended purpose. The user is responsible for the results of any application of the data for other than its intended purpose. The user is responsible for the results of any application of the data for other than its intended purpose.

Prepared Under the Direction of <b>KEVIN P. ARNETT</b> LT Colonel, C.E. District Engineer	Chart Date: Jun 06, 2022
Submittal: Hydro Survey Team Leader	Designed by: PDT
Recommendation: Chief, Hydro Survey Section	Plotted by: PDT
Approved: Chief, Construction Branch	Checked by: PDT
	Drawn by: PDT

CALIFORNIA  
HUMBOLDT COUNTY  
**HUMBOLDT BAY  
EUREKA CHANNEL  
CONDITION SURVEY  
2-4 JUNE 2022**

**Sheet Reference  
Number  
2 of 2**